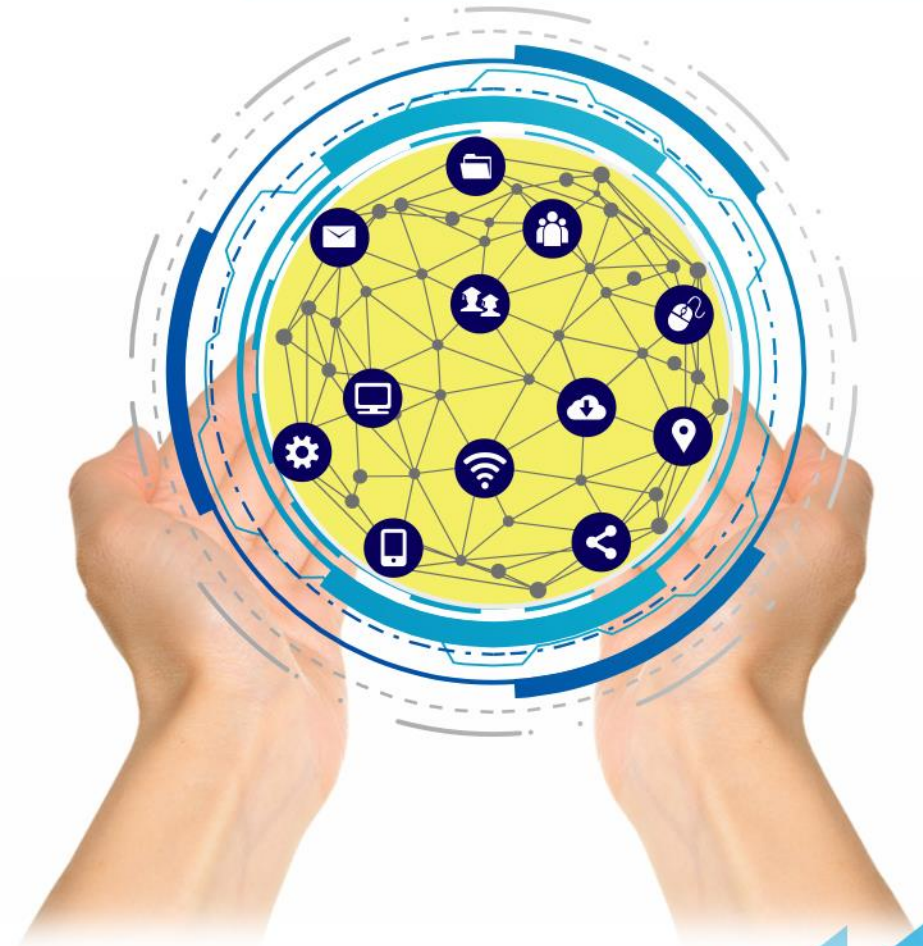


PUSAT PERKHIDMATAN PENGETAHUAN & KOMUNIKASI (PPPK) UNIVERSITI TEKNIKAL MALAYSIA MELAKA



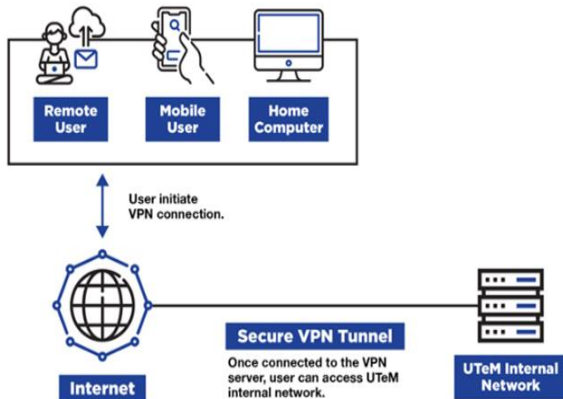
UTeM VIRTUAL PRIVATE NETWORK (VPN)

What is UTeM VPN?

It is a service that allows you to connect to the UTeM internal network via an encrypted tunnel to ensure your online privacy and protect your sensitive data.

How it works?

A VPN works by routing your device's internet connection through private server rather than your internet service provider so that when your data is transmitted to the internet, it comes from the VPN rather than your computer.



There are 4 hubs in UTeM VPN service which are ;



Academic
For academic staff.



Non-academic
For Non academic staff.



Post-graduate
For postgraduate student.



Under-graduate
For undergraduate student.

*Staff: Academic and Non-academic
*Student: Post-graduate and Under-graduate

Benefits



Enhanced security

When you connect to the network through a VPN, the data is kept secure and encrypted. In this way, the information is away from the hackers' eyes.



Access internal network

Information inside UTeM network can be accessed remotely even from home or from any other place.



Better performance

Bandwidth and efficiency of the network can generally be increased once a VPN solution is implemented.

PPPK

Pusat Perkhidmatan Pengetahuan & Komunikasi
Helpdesk : 06-270 1102
(PC, UC - Telefon, Internet, Software)

- Pusat Perkhidmatan Pengetahuan dan Komunikasi (PPPK) telah menyediakan perkhidmatan *Virtual Private Network* (VPN) untuk kegunaan pelajar dan staf UTeM yang memerlukan sambungan rangkaian dalaman (*intranet network*) UTeM daripada luar Kampus UTeM (*internet*).

• Apa itu *Virtual Private Network* (VPN)?

Virtual private network (VPN) adalah *connection and services* yang disediakan kepada pengguna untuk menghubungkan rangkaian luar ke rangkaian dalaman organisasi secara selamat. Pengguna akan mendapat fasiliti seolah-olah berada dalam rangkaian dalaman organisasi walaupun berada di luar kawasan organisasi.

- Penggunaan perisian seperti SMKB dan Matlab yang memerlukan capaian rangkaian dalaman UTeM sahaja. Pengguna perlu *install* perisian tersebut di komputer/PC di rumah, buat sambungan rangkaian rumah menggunakan VPN. Setelah itu, pengguna akan berada dalam rangkaian dalaman UTeM walaupun berada di luar kampus UTeM.

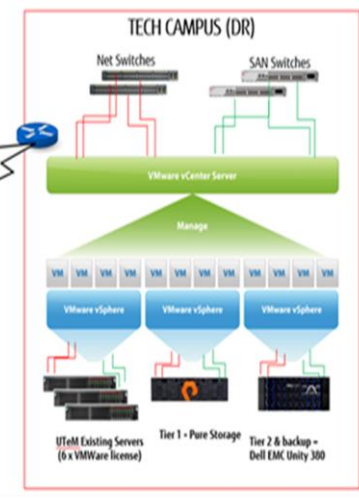
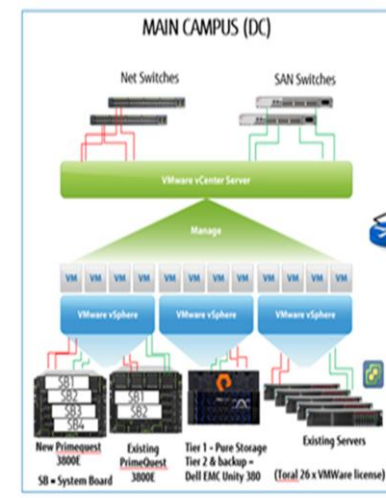
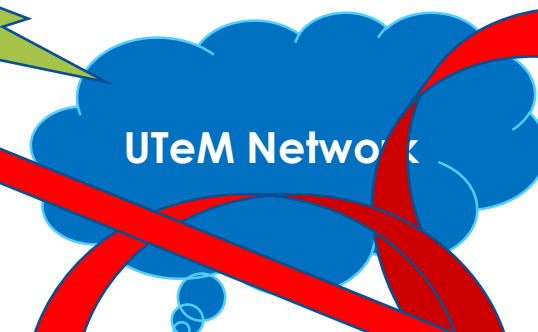
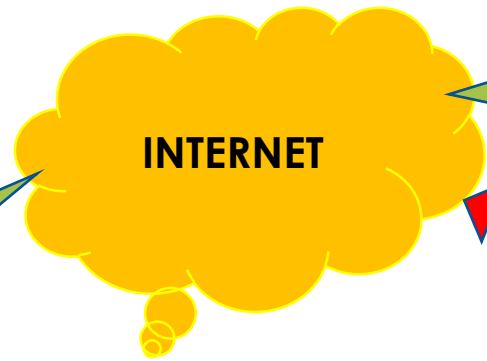
- **anywhere, anytime, Work From Home**

- **Confidentially, Integrity, Availability and Origin Authentication**

- **Perbezaan VPN berbanding RDP, TeamViewer, AnyDesk dan VNC**

UTeM VIRTUAL PRIVATE NETWORK (VPN)

Connect to
vpn.utm.edu.my



Access Internet/
 Intranet Systems/
 PC/Labs

UTeM VIRTUAL PRIVATE NETWORK (VPN)

HOWTOs : <https://pppk.utem.edu.my/ms/rujukan/tatacara/category/17-vpn-utem.html>



Windows PC Installation and Configuration



iOS (Apple) Configuration



Android Phone Configuration

UTeM VIRTUAL PRIVATE NETWORK (VPN)

Helpdesk PPPK - 06-270 1102

atau

Bahagian Keselamatan ICT dan Pusat Data (PPPK)

Thank you!